



# QUANTUM



Migrate user applications from Symbol DOS HHTs to the latest Windows CE and Windows Mobile HHTs without redeveloping.

## DOS TO CE MIGRATION FOR MOBILE COMPUTING

Do you use any of these devices?



Your appliance can be migrated to any of these



With the imminent discontinuation of Symbol's range of DOS-based mobile computers, and the proliferation of Windows CE and Windows Mobile as the new standard for mobile computing, migration of existing applications to the new devices is a key step for organisations looking to upgrade or supplement their existing HHT estate.

### > The Solution

- Uses existing application source code
- Identical look and feel of applications on old and new
- No user retraining
- Rapid acceptance by users
- Identical data interface on old and new
- No host modifications required
- Allows old DOS and new HHTs to co-exist
- Facilitates migratory path
- Low risk strategy



DELIVERING ENTERPRISE MOBILITY

# QUANTUM

## Case Studies

### Peacocks

**Peacocks** had used Symbol PDT 3100 devices for a variety of retail applications in their stores for a number of years. When the need arose to add more units to their estate, **Peacocks** needed to ensure that they were buying the most up to date hardware. **Peacocks** also wished to overcome operational delays that were occurring due to the limited processing performance of the DOS devices.

Using **Quantum**, **M-Netics** were able to migrate their application across to the MC3000 device, with no changes to the user interface or communications formats. A single source-code base allows further application enhancements to be applied to both hardware platforms without incurring additional development effort.

Users of the migrated application benefit from significantly faster file transfers (thus reducing operational delays), a clearer display and more rapid scanning.

The migrated application is rolled out on 500 MC3000s across 170 stores.

### Major Airport Systems Provider

Supplying baggage handling systems and solutions to major airports around the world, our client needed to future proof their solution against impending obsolete hardware. Their in-house custom software solution running on Symbol PDT 6846 DOS HHTs needed to be migrated to a Windows CE/Windows Mobile platform due to demand from both current and prospective clients. **M-Netics**, utilising their **Quantum** software emulator, was able to easily migrate their complete Airport Baggage Handling application to run on the class leading MC9000. This allowed the customer to offer their solution on the most up-to-date equipment, taking

advantage of the new GPRS connectivity option to co-exist alongside the local RF network, for maximum user productivity. The migration was fully completed from conception within three weeks, giving a reliable and stable solution interfacing directly with the existing host computer for less than £15,000.



## Frequently asked questions

### How does Quantum work?

**Quantum** emulates the BIOS and ADL libraries that are used extensively by the majority of 'C' language applications written for Symbol DOS HHT applications. Calls from your application to these libraries are handled by **Quantum** and converted into operations to perform exactly the same function on the new devices.

### Will my application look exactly the same?

Yes. **Quantum** faithfully reproduces the text screen layout of the original DOS device (albeit using better formed and crisper characters). Soft fonts can be loaded into **Quantum** to emulate specific fonts that may have been used by the original application. By doing this, users are presented with identical screens to the existing HHTs, thus eliminating any user retraining and support required.

### Do I need to rewrite my application?

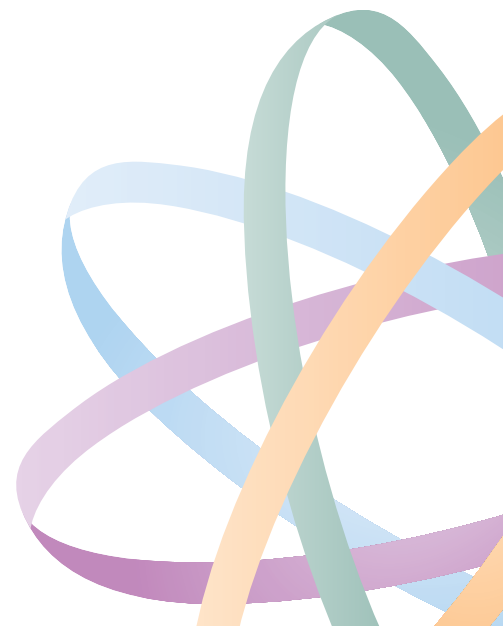
No. **Quantum** allows the same 'C' code base to be used for DOS HHTs and the new Windows CE/Windows Mobile HHTs.

### Does Quantum emulate all DOS HHT functions and libraries?

No, it emulates the BIOS and ADL library calls and some Symbol DOS library calls. Other means of programming DOS devices were available (such as Int86 processor or software calls, other languages and third parties libraries); where these techniques are used, replacement code must be written.

### Can I rebuild my application myself?

No. **Quantum** speeds the migration process from DOS to Windows CE significantly. However, it is usually necessary to work around some incompatibilities and application-specific functions, in order to achieve a fully reliable migration. We recommend that you allow us to review your application source code, in order to provide an estimate of the cost involved to migrate your application. This initial review is available free of charge, with typical migration costs between £10,000 to £15,000.



DELIVERING ENTERPRISE MOBILITY